

Lorain County Metro Parks

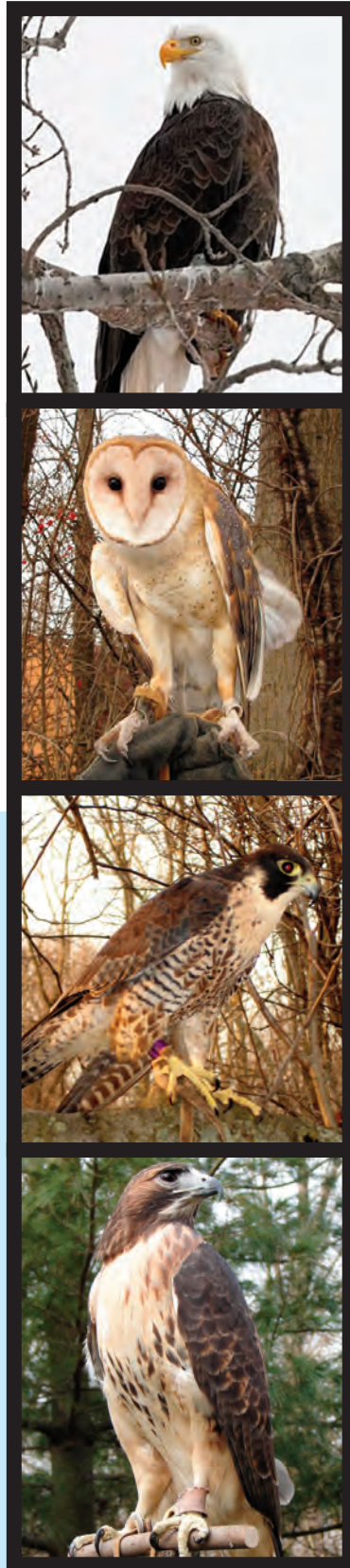


2007
Annual Report
To the Citizens of Lorain County



THE ADOPT-A-RAPTOR PROGRAM got underway in 2007, providing funds for the feeding and care of the District's Raptor program. Various "adoption" levels exist that provide the adoptee with opportunities to view and learn about Birds of Prey.

ADOPT - A - RAPTOR



ORIGINAL NEST EARLY 1900'S



THE GREAT NEST
 March, 2007 saw the dedication of "The Great Nest", a sculpture by local artist Jim Gundlach. Located at the Carlisle Visitor Center, this sculpture sits near the Raptor Center and depicts the Great Eagle's Nest of Brownhelm Township in the early 1900's.

THE GREAT NEST



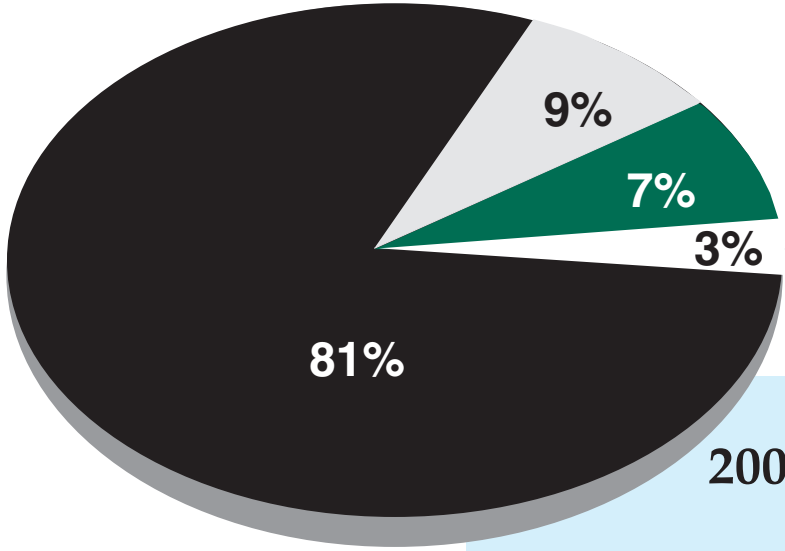
URBAN ADVENTURE



THE URBAN ADVENTURE PROGRAM, a partnership with the Lorain County Urban League, welcomes 40 youth to the parks every week for 16 weeks. Teens enjoy outdoor adventure while learning about team building, career education, social skills and other life lessons.

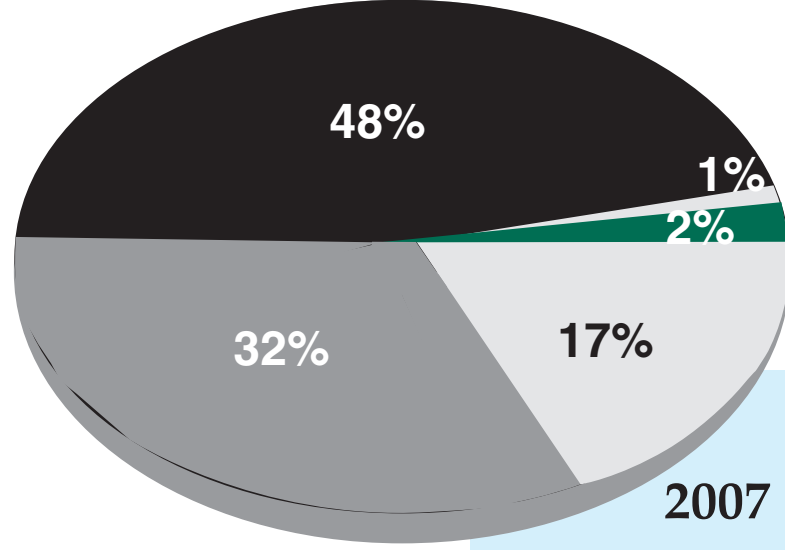
Contents

- Introduction
- Park District
- Accomplishments
- Park Programs
- Metro Parks Facilities and Room Use, Programs and Attendance
- Park Day-Use Visitors
- Financial Summary



2007 Revenue

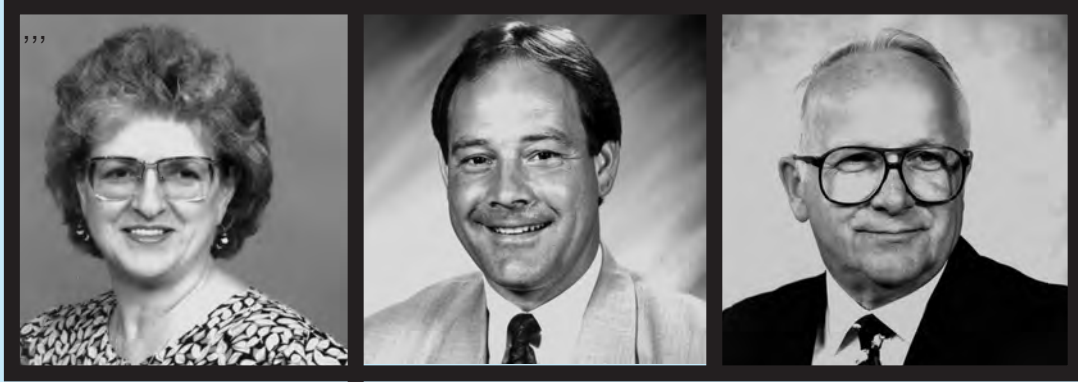
Taxes.....	\$8,375,530.....	81%
Fees.....	\$885,018.....	9%
Donations.....	\$331,510.....	3%
Misc.....	\$710,068.....	7%
Total.....	\$10,302,127.....	100%



2007 Expenditures

Personnel.....	\$3,594,881.....	32%
Operations.....	\$1,839,220.....	17%
Donations.....	\$148,309.....	1%
Capital.....	\$5,312,321.....	48%
Land.....	\$237,065.....	2%
Total.....	\$11,131,795.....	100%

BOARD OF PARK COMMISSIONERS



Sherrill M. McLoda

Kirk E. Stewart

Stanley G. Pijor

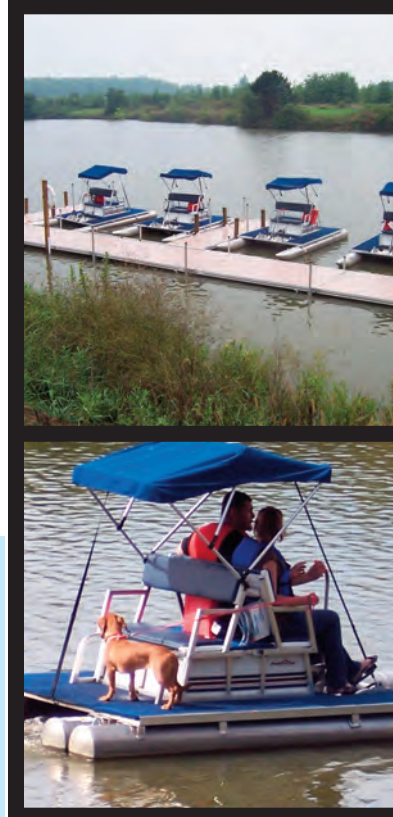
**FINANCIAL SUMMARY AS OF
DECEMBER 31, 2007**

REVENUE

Property Tax.....	\$8,375,530
Interest on Investments.....	357,931
Schoepfle Trust.....	255,510
Forest Hills Golf Course.....	367,296
Fees and Charges.....	428,137
Splash Zone.....	517,722
Total Revenue.....	\$10,302,127

EXPENDITURES

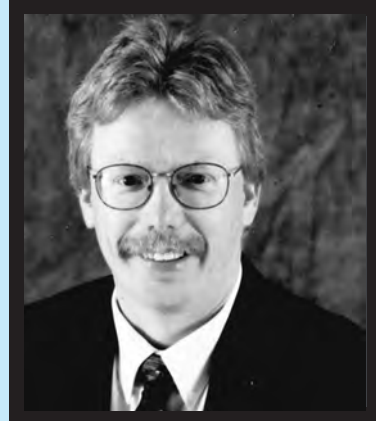
Salaries.....	\$2,730,058
Employee Fringe Benefits.....	864,823
Supplies.....	54,836
Programs.....	79,858
Materials.....	357,551
Repairs/Rentals.....	75,124
Utilities/Service.....	522,209
Advertising/Displays/Printing.....	115,661
Projects.....	70,963
Seminars/Training.....	18,371
Designated Donations.....	148,309
Equipment.....	257,292
Land Acquisition.....	237,065
Capital Improvements/Contracts.....	5,312,321
Miscellaneous.....	322,894
Total Expenditures.....	\$11,131,795



**WELLINGTON
RESERVATION
PADDLE BOATS**

Wellington Reservation instituted free paddle boat rides in the spring of 2007. Running 7 days a week, May through October, 3,602 visitors took advantage of this new recreational fun activity on Wellington Reservation's reservoir.

DIRECTOR/SECRETARY



James D. Martin

PROBATE COURT JUDGE



Frank J. Horvath

WELLINGTON RESERVATION



PARK PROGRAMS

The Lorain County Metro Parks' naturalist staff conducted 704 requested programs (those programs requested by outside groups) and 1,010 public programs (those listed in "The Arrowhead," the District's newsletter) with over 75,000 people in attendance.

Metro Parks Facilities, Room Use, Programs and Attendance

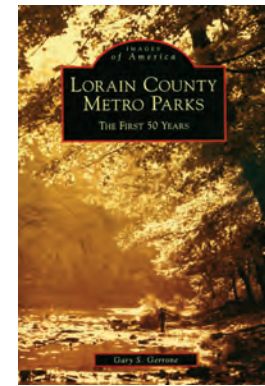
Requested Programs (704).....	32,892
Public Programs (1,010).....	42,031
Senior Citizen Bus Tours (116).....	2,451
Halloween Fair/Holiday Lights	35,535
Amherst Beaver Creek (417).....	14,068
Carlisle Visitor Center (486).....	18,584
Carriage Barn (185).....	7,148
Forest Hills.....	27,475
French Creek Nature Center (99).....	4,278
Johnson Wetland Center (139).....	4,800
Schoepfle Garden (30).....	585
Total.....	189,847

Park Day-Use Visitors

Amherst.....	155,000
Black River.....	402,601
Caley.....	9,768
Carlisle.....	172,011
Columbia.....	83,912
French Creek.....	121,753
Indian Hollow.....	36,024
North Coast Trail.....	128,000
Sandy Ridge.....	50,796
Lakeview.....	370,986
Schoepfle Garden.....	66,189
Splash Zone.....	264,354
Vermilion.....	294,901
Wellington.....	45,650
Total.....	2,201,945

(Facility and day-use visitors)

LORAIN COUNTY METRO PARKS CELEBRATES 50 YEARS



METRO PARKS CELEBRATES 50 YEARS OF SERVICE

Celebratory banners in each park, an art show depicting the history of the Metro Parks and images of America's "Lorain County Metro Parks The First 50 Years", by Gary Gerrone, highlighted the year-long celebration. The dedication of the Great Nest, Lakeview Park and other special events were also opportunities to celebrate this momentous time in the history of the Metro Parks.

- ★ *Amherst Beaver Creek*
- ★ *Avon Lake Reservation*
- ★ *Black River Reservation*
- ★ *Caley Reservation*
- ★ *Carlisle Reservation*
- ★ *Charlemont Reservation*
- ★ *Columbia Reservation*
- ★ *Forest Hills Golf Center*
- ★ *French Creek Reservation*
- ★ *Indian Hollow Reservation*
- ★ *Kipton Reservation*
- ★ *Lakeview Park*
- ★ *Miller Nature Preserve*
- ★ *North Coast Inland Trail*
- ★ *Sandy Ridge Reservation*
- ★ *Schoepfle Garden*
- ★ *Vermilion River Reservation*
- ★ *Wellington Reservation*

YOUR METRO PARKS

The Lorain County Metropolitan Park District was established in 1957 by the Lorain County Probate Court. Under the provisions of Chapter 1545 of the Ohio Revised Code, Lorain County Metro Parks is a special district operating as a separate political subdivision of the State of Ohio. The Metro Parks provide residents with preservation of open space, conservation, education and outdoor recreation programs and facilities.

Funding for the Metro Parks is provided primarily by a 1.3 mill countywide property tax levy. Other sources of income include grants, gifts and bequests along with fees generated from the Forest Hills Golf Course, Splash Zone and nature programs and facility rentals.

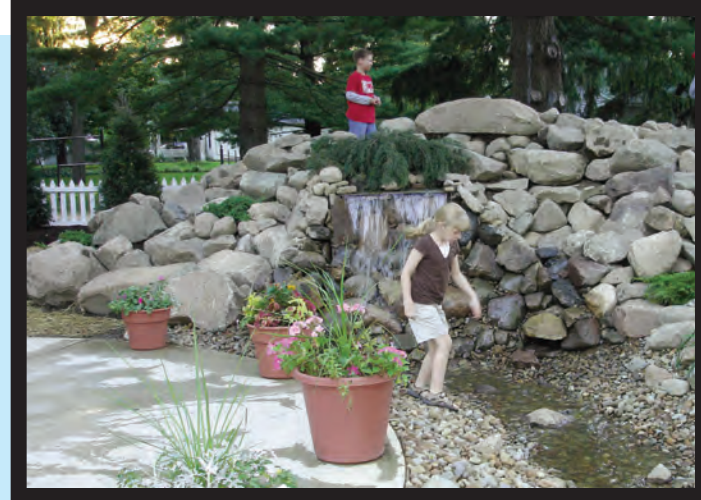
Lorain County Metro Parks is governed by a three-member Board of Park Commissioners. Members are appointed by the Lorain County Probate Court Judge and serve without pay. The Board of Park Commissioners is responsible for policy and decision making. The Director/Secretary is responsible for the daily management of the Metro Parks.

The Lorain County Metro Parks staff is comprised of 54 full-time and 10 year-around, part-time employees, supplemented by up to 55 seasonal staff members in the summer months. Thirteen members of the Metro Parks' ranger staff are certified Ohio Peace Officers. The rangers are responsible for the public safety in the Metro Parks and are also assigned park maintenance and supervisory duties. Other staff members maintain reservations, perform administrative and accounting duties and conduct educational programming and special event activities in the park district.

Volunteer support is an essential element to the success of the Metro Parks. Over the past year, volunteers donated over 25,000 hours of their time to the Metro Parks. The organization, known as The Friends of Metro Parks in Lorain County Inc., now totals over 550 members.

THE SCHOEPFLE CHILDREN'S GARDEN

was completed in September of 2007. Local landscapers became sponsors to this special garden. The garden consists of delightful places where childhood fun and adventure begin. An A-Mazing Piano shaped maze, a Sensory Cymbal Garden representing the Fives Senses, a Flute-A-Pillar crawl through which is a combination between a flute and caterpillar, a Rocky "G" Clef mound (shown) for climbing, plus a delightful Carousel make up some of the garden's features.



LAKEVIEW PARK BEACH HOUSE

Opening to rave reviews in early December 2007, the Lakeview Beach House is the home of the *Rose Cafe'* by DeLuca's Place in the Park. Available for daily breakfast and lunch, the Rose Cafe' is host to the special events plaza, and it is also a great place for parties and weddings.



TAP CORPS FORMED

Friends of Metro Parks in Lorain County, Inc. started the TAP Corps in 2007. "Teens at the Parks" is for youth 12-17 and combines volunteerism with a sense of community that will serve the youth as adults, as well. Recreational activities, volunteer opportunities at the park, career study and employment opportunities are some of the features of this program.



TRUENORTH CULTURAL ARTS

The Lorain County Metro Parks entered into a partnership at the French Creek Nature Center with TrueNorth Cultural Arts in 2007. This partnership brings visitors the opportunity to participate in and enjoy cultural arts, including music (in many forms), theater arts, visual arts and much, much more.

LAKEVIEW PARK HISTORICAL ROSE GARDEN

Over 2,500 roses adorn the restored Lakeview Rose Garden. Donations to the garden have allowed the Lorain County Metro Parks to set up a Rose Garden Endowment Fund for the future operation and maintenance of the garden. Our thanks to the Historical Rose Garden Committee for their guidance and purpose.

