

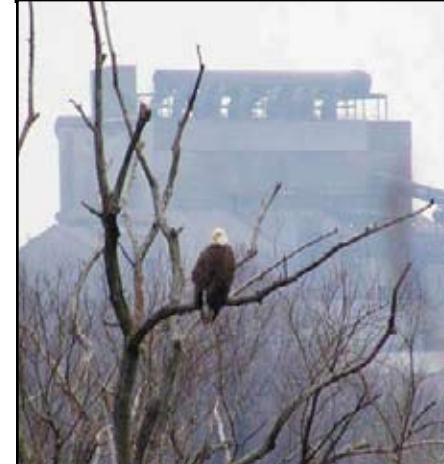
2008
ANNUAL REPORT

LORAIN COUNTY METRO PARKS
2008

Annual Report
TO THE CITIZENS OF LORAIN COUNTY



LORAIN COUNTY METRO PARKS



DISCOVER YOUR PARKS





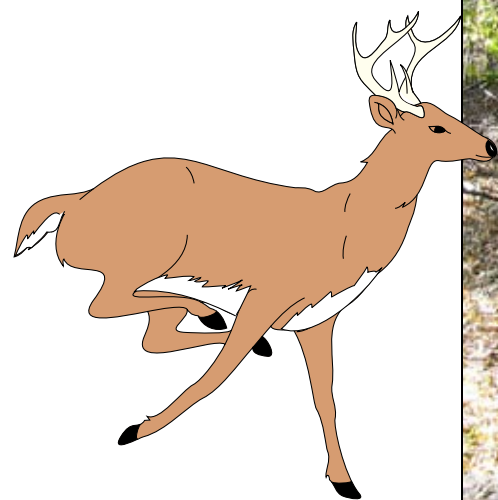
KOPF FAMILY RESERVATION

Discover your New Metro Park

The Kopf Family Reservation was dedicated in November of 2008.

The Reservation boasts two miles of trails that travel from the Avon Lake Public Library to Belle Road Park and a southern loop that returns to Belle Road Park.

Kopf Family Reservation is a partnership between the Lorain County Metro Parks and the City of Avon Lake and is a great place to enjoy the woodlands which are rich with wildlife. Many times visitors have reported seeing deer and other animals while walking the trails. Discover your new Metro Park today!



LAKEVIEW PARK



Come visit the beautiful Bathhouse at Lorain County Metro Parks' Lakeview Park. Enjoy the "Rose Cafe" and its spectacular view of the seasonal changes of Lake Erie.

Lorain County Metro Parks Setting New Excitement!

Contents

INTRODUCTION

PARK DISTRICT

ACCOMPLISHMENTS

PARK PROGRAMS

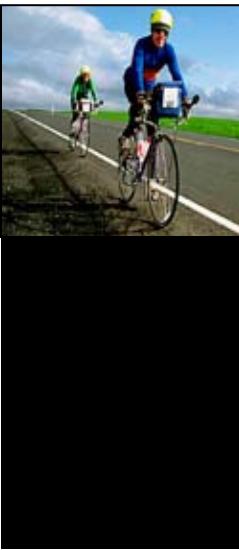
METRO PARK FACILITIES & ROOM USE

PARK DAY-USE VISITORS

FINANCIAL SUMMARY



Lorain County Metro Parks



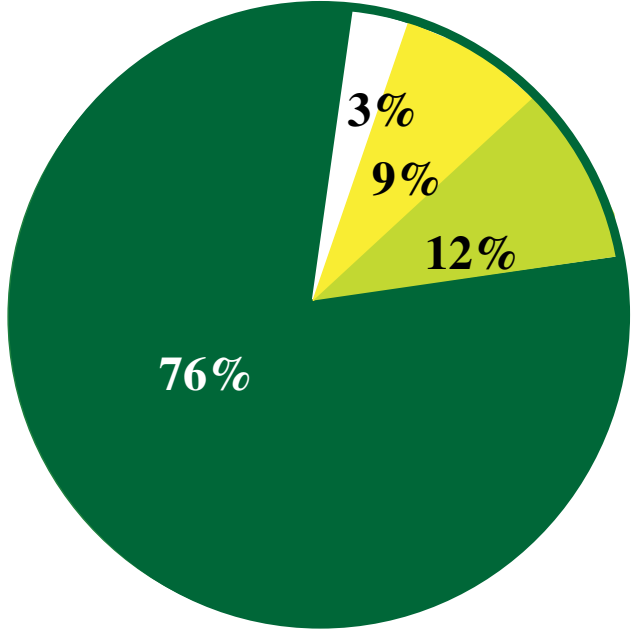
In May 2008 the Steel Mill Trail Extension was opened with much excitement. The Steel Mill Trail adds two miles on to the already existing Bridgeway Trail, which extends from Bur Oak Picnic Area in Elyria to Days Dam Picnic Area in Lorain. The Steel Mill Trail begins north of Days Dam and ends at Route 611.

When the Bridgeway Trail opened in 1993, connecting Elyria and Lorain, the Metro Parks had a vision of extending the trail further north. Now, for the first time, Lorain County citizens are able to get a glimpse inside the Lorain Steel Mill. As visitors walk, ride, run, or rollerblade along the trail they will see the slag fields of the steel mill on one side and the Black River and natural landscape on the other side. They can also learn the history of the Steel Mill that built Lorain. It is quite an adventure on the Steel Mill Trail Extension!



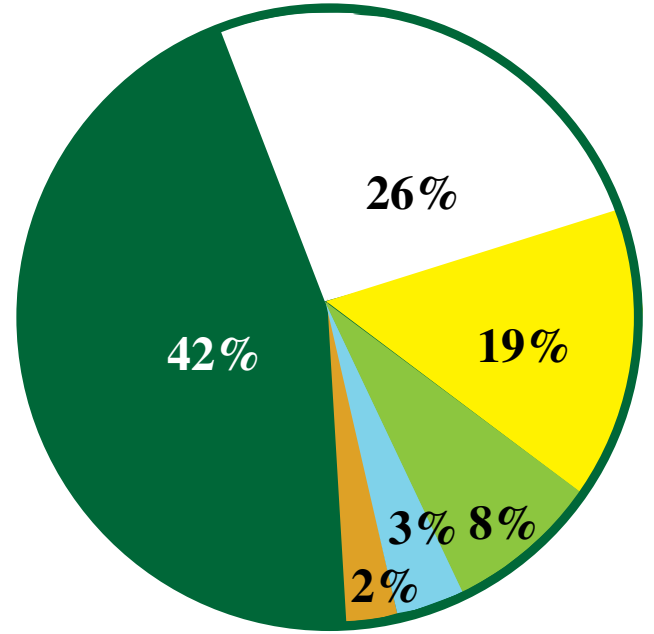
2008 Revenue

TAXES.....	\$8,412,499.....	76%
FEES.....	\$1,359,157.....	12%
DONATIONS.....	\$294,108.....	3%
MISC.....	\$991,500.....	9%
TOTAL.....	\$11,057,264.....	100%



2008 Expenditures

PERSONNEL.....	\$3,861,555.....	42%
OPERATIONS.....	\$1,781,569.....	19%
DONATIONS.....	\$259,075.....	3%
CAPITAL.....	\$2,388,138.....	26%
LAND.....	\$195,167.....	2%
GRANTS.....	\$726,031.....	8%
TOTAL.....	\$9,211,535.....	100%



ABOUT THIS PUBLICATION
 Ohio Revised Code Section 1545.08 requires that park districts periodically publish a report to the citizens summarizing the district's activities. This report is intended to fulfill this requirement. Other reports regarding specific programs or facilities are available annually. If you have any questions concerning this publication, please contact Lorain County Metro Parks at (440) 458-5121. Unless otherwise noted, numbers in this report were accurate as of January 1, 2009.

BOARD OF PARK

Commissioners

SHERRILL M. MCLODA



FREDERICK L. ALSPACH



ROBERT M. CAMPANA

DIRECTOR

Secretary



JAMES D. MARTIN

PROBATE

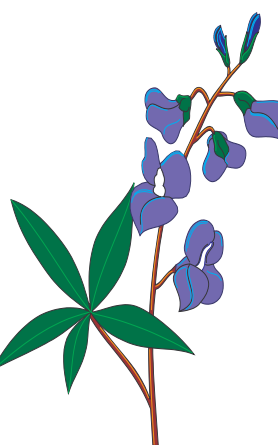
Court Judge



FRANK J. HORVATH

YOUR LORAIN COUNTY

- ★ *AMHERST BEAVER CREEK*
- ★ *KOPF FAMILY RESERVATION*
- ★ *BLACK RIVER RESERVATION*
- ★ *CALEY RESERVATION*
- ★ *CARLISLE RESERVATION*
- ★ *CHARLEMONT RESERVATION*
- ★ *COLUMBIA RESERVATION*
- ★ *FOREST HILLS GOLF CENTER*
- ★ *FRENCH CREEK RESERVATION*
- ★ *INDIAN HOLLOW RESERVATION*
- ★ *KIPTON RESERVATION*
- ★ *LAKEVIEW PARK*
- ★ *MILLER NATURE PRESERVE*
- ★ *NORTH COAST INLAND TRAIL*
- ★ *SANDY RIDGE RESERVATION*
- ★ *SCHOEPFLE GARDEN*
- ★ *SPLASH ZONE*
- ★ *VERMILION RIVER RESERVATION*
- ★ *WELLINGTON RESERVATION*



METROPOLITAN PARK DISTRICT

The Lorain County Metropolitan Park District was established in 1957 by the Lorain County Probate Court. Under the provisions of Chapter 1545 of the Ohio Revised Code, Lorain County Metro Parks is a special district operating as a separate political subdivision of the State of Ohio. The Metro Parks provide residents with the preservation of open space, conservation, education and outdoor recreation programs and facilities.

Funding for the Metro Parks is provided primarily by a 1.3 mill countywide property tax levy. Other sources of income include grants, gifts and bequests along with fees generated from the Forest Hills Golf Course, Splash Zone and facility rentals.

Lorain County Metro Parks is governed by a three-member Board of Park Commissioners, which is appointed by the Lorain County Probate Court Judge and serves without pay.

The Board of Park Commissioners is responsible for policy and decision making. The Director/Secretary is responsible for the daily management of the Metro Parks. The Lorain County Metro Parks staff is comprised of 57 full-time and 9 year-round, part-time employees, supplemented by up to 155 seasonal staff members in the summer months. Fourteen members of the Metro Parks' ranger staff are certified Ohio Peace Officers. The rangers are responsible for public safety in the Metro Parks and are also assigned park maintenance and supervisory duties. Other staff members maintain ties and conduct educational programming and special event activities in the park district.

Volunteer support is an essential element to the success of the Metro Parks. Over the past year, volunteers donated over 25,000 hours of their time to the Metro Parks. Friends of Metro Parks in Lorain County Inc. now totals over 450 members.

EXPERIENCE THE FUN OF

Park Programs



**THE LORAIN COUNTY METRO PARKS' NATURALIST STAFF
CONDUCTED 657 REQUESTED PROGRAMS**

**(THOSE PROGRAMS REQUESTED BY OUTSIDE GROUPS) AND 1,299 PUBLIC PROGRAMS
(THOSE LISTED IN THE ARROWHEAD, THE DISTRICT'S
NEWSLETTER) WITH OVER 75,000 PEOPLE IN ATTENDANCE.**

METRO PARKS FACILITY USE, ROOM USE AND PROGRAMS

Requested Programs (657).....	26,104
Public Programs (1,299).....	48,982
Senior Citizen Bus Tours (123).....	2,939
Halloween Fair/Holiday Lights.....	35,535
Amherst Beaver Creek (435).....	14,428
Carlisle Visitor Center (535).....	21,530
Carriage Barn (165).....	8,495
Forest Hills.....	23,916
French Creek Nature Center (82).....	3,618
Johnson Wetland Center (101).....	3,563
Schoepfle Garden (27)	434
Total.....	189,544



METRO PARKS DAY-USE VISITORS

Amherst.....	155,000
Black River.....	400,941
Caley.....	7,446
Carlisle.....	143,345
Columbia.....	57,675
French Creek.....	105,124
Indian Hollow.....	58,069
North Coast Inland Trail.....	128,000
Sandy Ridge.....	50,796
Lakeview.....	930,000
Schoepfle Garden.....	66,189
Splash Zone.....	215,480
Vermilion.....	294,901
Wellington.....	44,869
Total.....	2,657,835

(Facility and day-use visitors)

FINANCIAL SUMMARY AS OF

December 31, 2008



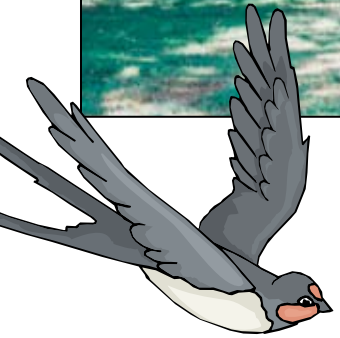
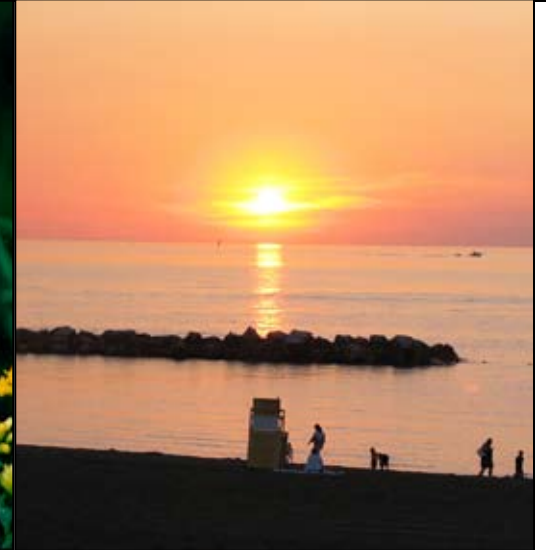
REVENUE

Property Tax.....	\$8,412,499
Interest on Investments.....	173,428
Schoepfle Trust.....	288,114
Forest Hills Golf Course.....	329,135
Grants.....	726,031
Fees and Charges.....	230,950
Donations & Sponsors.....	294,108
Refunds/Reimbursements/Misc.....	92,041
Splash Zone.....	510,958
Total Revenue.....	11,057,264

EXPENDITURES

Salaries.....	\$2,929,644
Employee Fringe Benefits.....	931,911
Supplies.....	53,536
Programs.....	104,53
Materials.....	386,799
Repairs/Rentals.....	34,570
Utilities/Service.....	581,276
Advertising/Displays/Printing.....	138,709
Projects.....	58,182
Seminars/Training.....	17,268
Designated Donations.....	259,075
Equipment.....	210,812
Land Acquisition.....	195,167
Capital Improvements/Contracts.....	2,388,138
Grants/Miscellaneous.....	921,938
Total Expenditures.....	9,211,536

District Accomplishments



ARCHEOLOGICAL DIG

The Cleveland Museum of Natural History conducted its Archeology in Action program at the Burrell Homestead during June and July of 2008. During the dig many artifacts were found that were used in Native Americans' day-to-day living.

GOLD STAR MOTHERS BED

On September 28, 2008, the new Gold Star Mothers Rose Bed was dedicated at Lakeview Park. A Gold Star rose bed was part of the original Rose Garden and was started by local Gold Star Mothers in memory of their sons and daughters lost in the wars. An original Gold Star Mother uniform, which is on loan from Amvets Post 47, is now on display in the Bathhouse at Lakeview Park.

BLOOMS OF STEEL

Lorain County Metro Parks and TrueNorth Cultural Arts commissioned the original play *Blooms of Steel: The Making of an International City*. This play took the audience along the newly opened Steel Mill Trail as well as through the history of the Lorain Steel Mill. Over 1,500 people attended nine performances.

SUNSET FESTIVAL

In August 2008, the Sunset Festival returned to Lakeview Park. The festival was originally about the community and we did not stray from that theme. Community groups, local artists, and local entertainment helped visitors' end their Summer with a Sunset!

BUTTERFLY GARDEN

French Creek Nature Center once again hosted the Butterfly Garden from July to September. Visitors enjoyed a close up view of hundreds of butterflies on the deck of the nature center. The garden was filled with plants that attracted butterflies and the staff conducted several programs about the small creatures.

SUNSET CONCERT SERIES

Lakeview Park hosted the first Sunset Concert Series in June and July of 2008. Thousands of visitors enjoyed beautiful music and splendid Lake Erie sunsets on Friday nights. A diversity of groups filled the evening with pleasing tunes.

